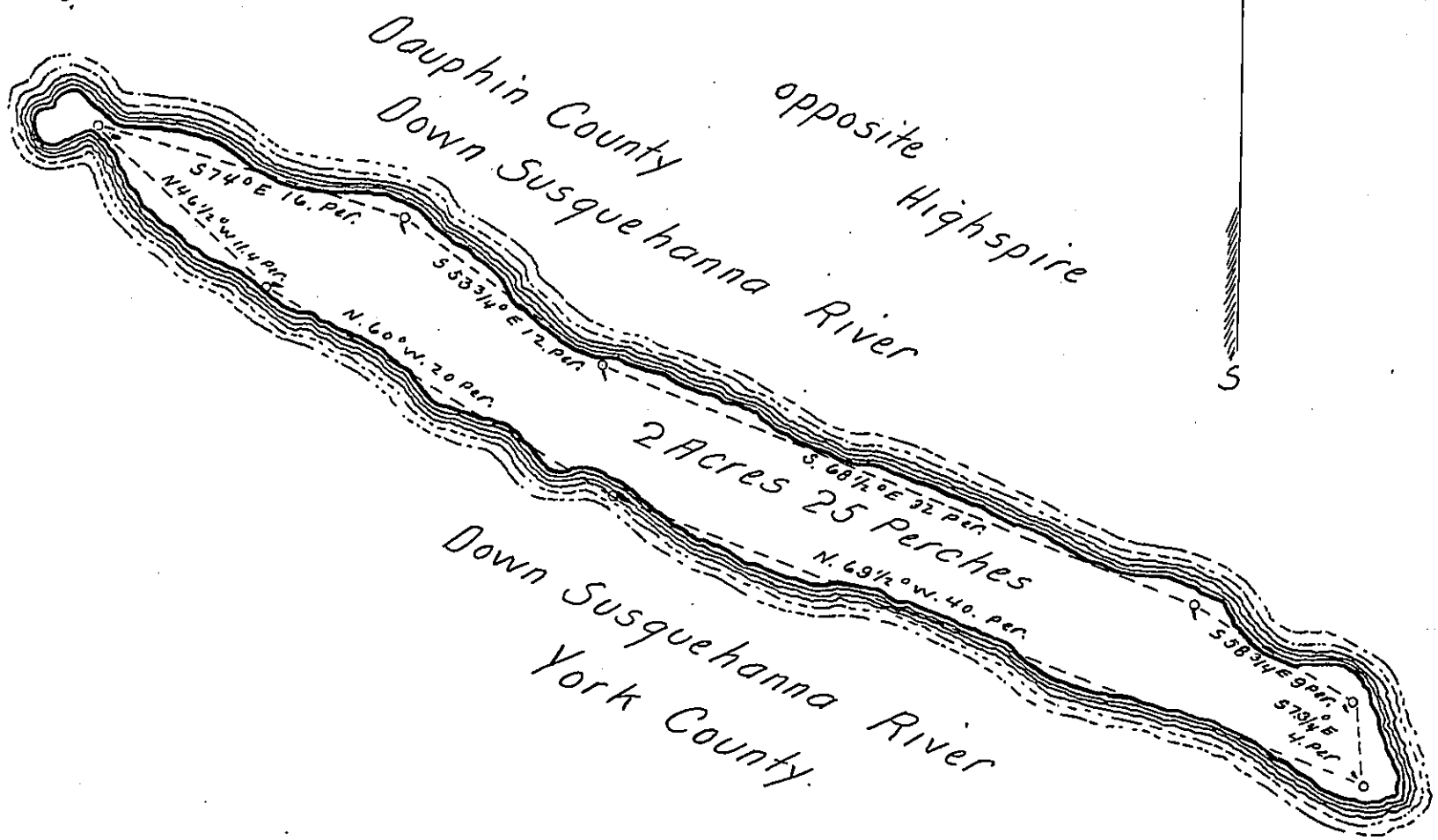


76°-49' Longitude
40°-12' Latitude

below
Gouffer Island
about 100 yds.



an Island in the Susquehanna River

A Draft of ~~a tract of land~~ situated in the Township of Lower Swatara and County of Dauphin containing Two acres twenty five perches ~~and allowance of six per cent for roads, etc.~~ Surveyed the 27th day of December 1898, in pursuance of a warrant granted to J. F. Klug dated the 21st day of December 1898.

To James W. Latta, Esq. } S.W. Cooper
Secretary of Internal Affairs } County Surveyor.

IN TESTIMONY that the above is a copy of the original remaining on file in the Department of Internal Affairs of Pennsylvania, made conformably to an Act of Assembly approved the 16th day of February, 1833, I have hereunto set my Hand and caused the Seal of said Department to be affixed at Harrisburg, this fourth day of August 1905.

Loac D Brown
Secretary of Internal Affairs.